



Department of Public Works
Engineering Division
 Robert F. Phillips, P.E., City Engineer
 City-County Building, Room 115
 210 Martin Luther King, Jr. Boulevard
 Madison, Wisconsin 53703
 Phone: (608) 266-4751
 Fax: (608) 264-9275
engineering@cityofmadison.com
www.cityofmadison.com/engineering

Assistant City Engineer
 Michael R. Dailey, P.E.
Principal Engineer 2
 Gregory T. Fries, P.E.
 Christopher J. Petykowski, P.E.
Principal Engineer 1
 Christina M. Bachmann, P.E.
 Eric L. Dundee, P.E.
 John S. Fahrney, P.E.
Facilities & Sustainability
 Jeanne E. Hoffman, Manager
Operations Manager
 Kathleen M. Cryan
Mapping Section Manager
 Eric T. Pederson, P.S.
Financial Manager
 Steven B. Danner-Rivers

April 20, 2016

NOTICE OF ADDENDUM
 ADDENDUM NO. 1
 CONTRACT NO. 7430

NORTH LAKE STREET RESURFACING -
 ASSESSMENT DISTRICT 2016

Revise and amend the contract document(s) for the above project as stated in this addendum, otherwise, the original document shall remain in effect.

SPECIAL PROVISIONS:

ADD TO BID ITEM 50225 – UTILITY TRENCH PATCH TYPE III

Install trench patches on W. Dayton St. per the standard specifications. For trench patches in W. Johnson St. that are intended to be used for maintenance of traffic, install all base material as required for the permanent pavement, and the minimum asphalt thickness shall be 3.5”.

PROPOSAL:

Several items have been revised, added or removed. A summary of the changes to the proposal are as follows:

Action	Bid Item	Description	Original Quantity	New Quantity
REMOVE	40411	CONCRETE PAVEMENT RECONSTRUCTION	40 S.Y.	0 S.Y.
REVISE	60261	ELECTRICAL TRENCH	550 L.F.	585 L.F.
ADD	20314	REMOVE PIPE	0 L.F.	30 L.F.
ADD	20336	PIPE PLUG	0 EACH	1 EACH
REVISE	50212	SELECT BACKFILL FOR SANITARY SEWER	818 T.F.	832 T.F.
ADD	50357	COMPRESSION COUPLING	0 EACH	1 EACH
REVISE	50791	SANITARY SEWER TAP	8 EACH	9 EACH
ADD	90073	14” DIAMETER SANITARY SEWER LATERAL	0 L.F.	14 L.F.

April 20, 2016

Page 2

SPECIAL PROVISIONS:

ADD:

BID ITEM 90073 - 14" DIAMETER SANITARY SEWER LATERAL

Work under this bid item shall include installation on 14" diameter sewer lateral as shown on the plan set. The 14" diameter pipe installed shall be 14" diameter AWWA C905 DR 21. The 14" diameter sewer lateral is located on the plans according to survey and the UW utility records. The AWWA C905 pipe was not selected because of needing to be pressure rated (this not an encroachment to water main) but rather it was select to attempt to best match the size of the existing 14" diameter cast iron pipe. If the contractor determines that that the inside diameter of the C905 pipe is smaller than the cast iron pipe, the contractor shall propose an alternate pipe at not no additional cost.

Work shall be completed in conformance with Article 503 of the City of Madison Standard Specifications for Public Works Construction, Latest Edition.

The bend necessary to connect the 14" diameter lateral to the existing 14" diameter cast iron sewer shall be considered incidental to the sanitary sewer lateral.

The old 14" diameter cast iron lateral shall be removed and also plugged off at SAS 4851-014. Pipe plug necessary to abandon the old cast iron pipe shall be paid for separately under Bid Item 20336 Pipe Plug. Pipe Removal shall be paid for under Bid Item 20314 – Remove Pipe.

METHOD OF MEASUREMENT

14" Diameter Sanitary Sewer Lateral shall be measured separately by the Lineal foot.

BASIS OF PAYMENT

14" Diameter Sanitary Sewer Lateral will be paid for at the contract price, and is considered full compensation for all work as listed above.

PLAN SET:

Remove and Replace revised plan sheets as follows:

Sheet U-1: Modified 14" lateral at SAS #1.

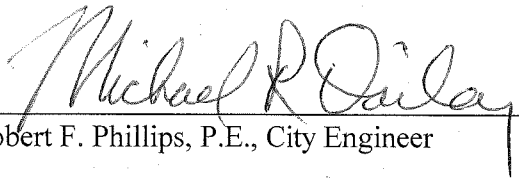
Please acknowledge this addendum on page E1 of the contract documents and/or in Section E: Bidder's Acknowledgement on Bid Express.

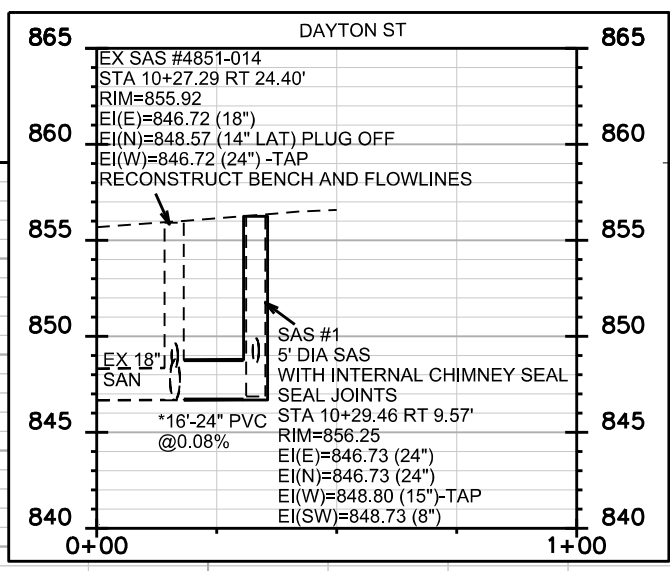
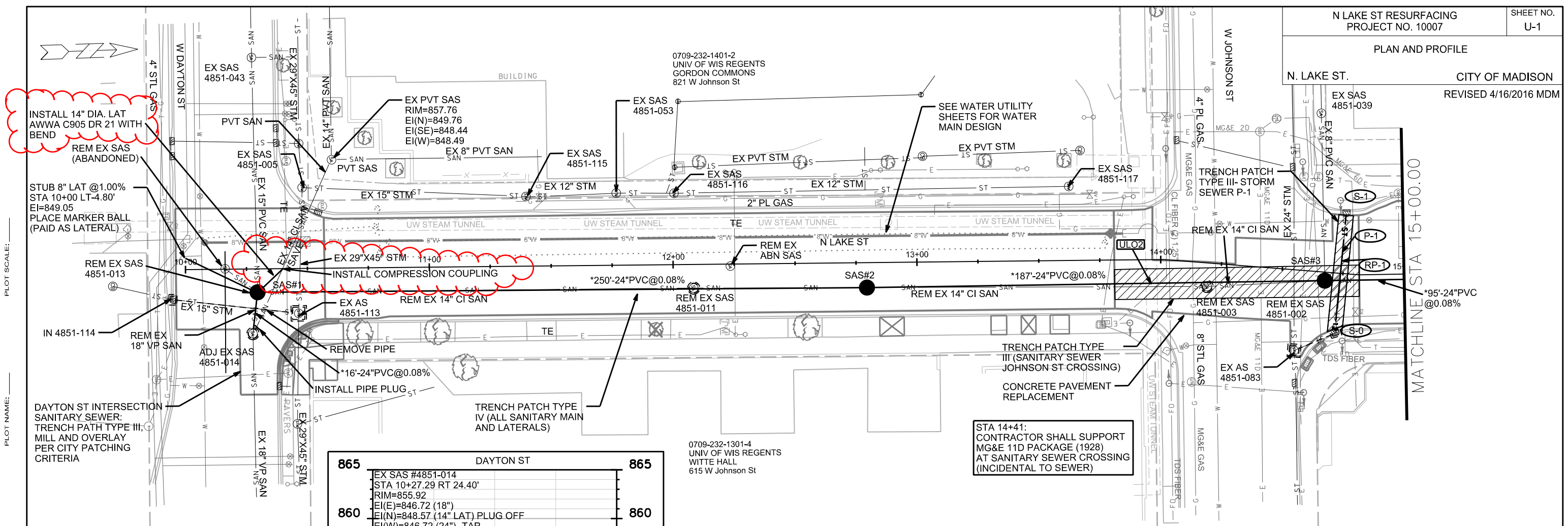
Electronic version of these documents can be found on the Bid Express web site at:

<http://www.bidexpress.com>

If you are unable to download plan revisions associated with the addendum, please contact the Engineering office at 608-266-4751 receive the material by another route.

RFP:jmw


FOR Robert F. Phillips, P.E., City Engineer



SAS #1
5' DIA SAS
WITH INTERNAL
CHIMNEY SEAL
SEAL JOINTS
STA 10+29.46 RT 9.57'
RIM=856.25
EI(E)=846.73 (24")
EI(N)=846.73 (24")
EI(NW)=848.57 (14") TAP
EI(W)=848.80 (15") TAP
EI(SW)=848.73 (8")

REM EX SAS #4851-013
STA 10+29.46 RT 9.57'
RIM=856.25
EI(E)=846.65 (18")
EI(N)=847.00 (16")
EI(W)=848.80 (15")

REM EX SAS #4851-011
STA 12+08.35 RT 9.70'
RIM=857.32
EI=847.32

SAS #2
5' DIA SAS
SEAL JOINTS
STA 12+79.42 RT 10.24'
RIM=857.53
EI(S)=846.92
EI(N)=846.92

SAS #3
5' DIA SAS
WITH INTERNAL CHIMNEY SEAL
SEAL JOINTS
STA 14+67.76 RT 3.45'
RIM=858.55
EI(S)=847.08 (24")
EI(N)=847.08 (24")
EI(W)=848.31 (8") TAP

REM EX SAS #4851-003
STA 14+19.83 RT 9.66'
RIM=858.13
EI=847.41

REM EX SAS #4851-002
STA 14+67.78 RT 3.53'
RIM=858.51
EI=847.51

STA 14+41:
CONTRACTOR SHALL SUPPORT
MG&E 11D PACKAGE (1928)
AT SANITARY SEWER CROSSING
(INCIDENTAL TO SEWER)

*PIPE SHALL CONFORM TO ASTM
F679 PS115

INSTALL 14" DIA. LAT
AWWA C905 DR 21 WITH
BEND
REM EX SAS
(ABANDONED)

STUB 8" LAT @1.00%
STA 10+00 LT-4.80'
EI=849.05
PLACE MARKER BALL
(PAID AS LATERAL)

INSTALL COMPRESSION COUPLING

REMOVE PIPE

INSTALL PIPE PLUG

TRENCH PATCH TYPE
IV (ALL SANITARY MAIN
AND LATERALS)

TRENCH PATCH TYPE
III (SANITARY SEWER
JOHNSON-ST CROSSING)
CONCRETE PAVEMENT
REPLACEMENT

PLOT SCALE:

PLOT NAME:

REV. DATE:

ORIGINATOR: CITY OF MADISON, STREETS DIVISION